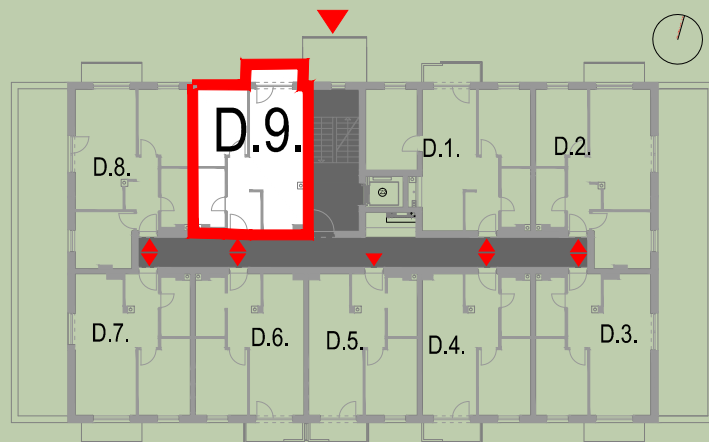
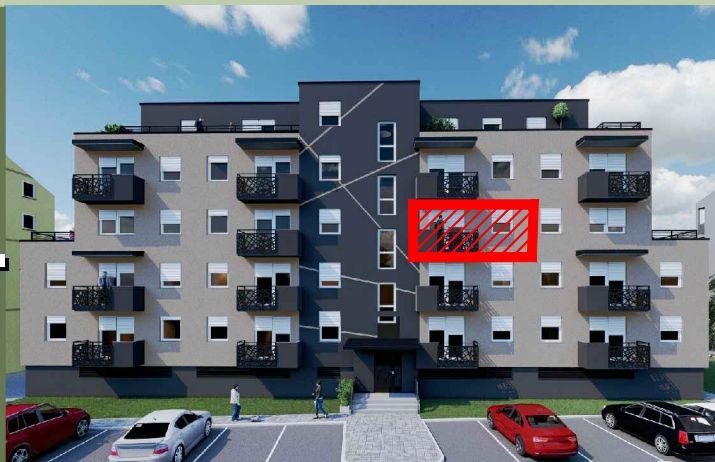
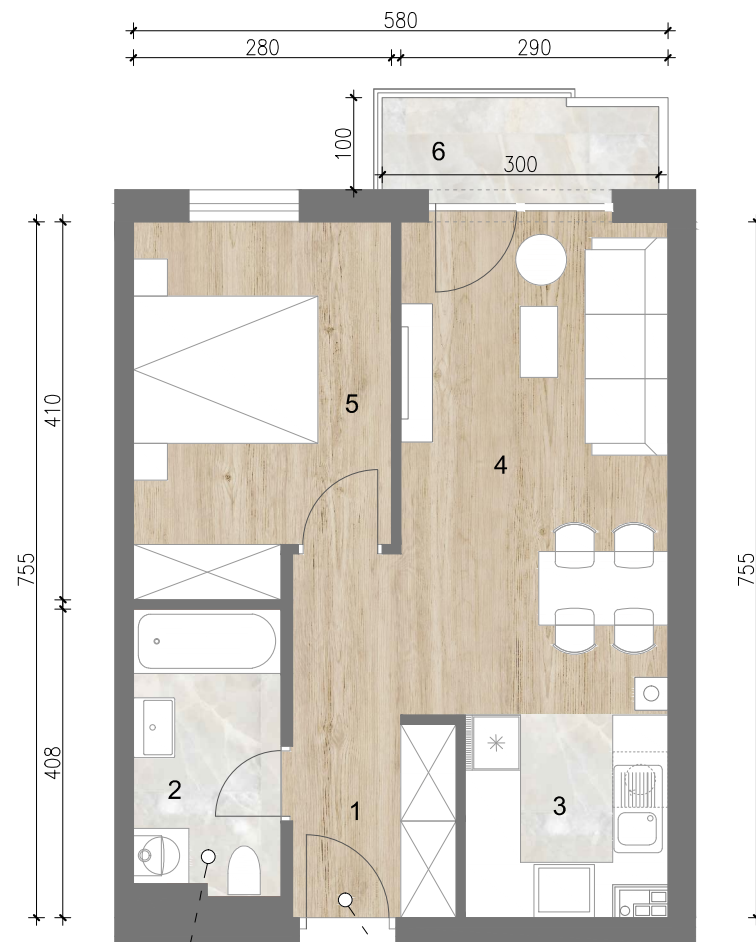


STAN D.9.

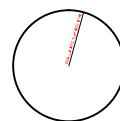
43,10m²



| OZNAKA | NAZIV PROSTORIJE | NETO POVRŠINA/m ² | KOEF. | NETO KORISNA POVRŠINA/ m ² |
|---------------|---------------------|------------------------------|-------|---------------------------------------|
| 1 | PREDPROSTOR | 3,80 | 1,00 | 3,80 |
| 2 | KUPAONICA | 4,90 | 1,00 | 4,90 |
| 3 | KUHINJA | 4,60 | 1,00 | 4,60 |
| 4 | DN. BORAVAK + BLAG. | 17,40 | 1,00 | 17,40 |
| 5 | SPAVAĆA SOBA | 10,80 | 1,00 | 10,80 |
| 6 | BALKON - natkriven | 3,20 | 0,50 | 1,60 |
| UKUPNO | | 44,70 | | 43,10 |



▲ ULAZ



keramičke pločice

parket

- 4. KAT -