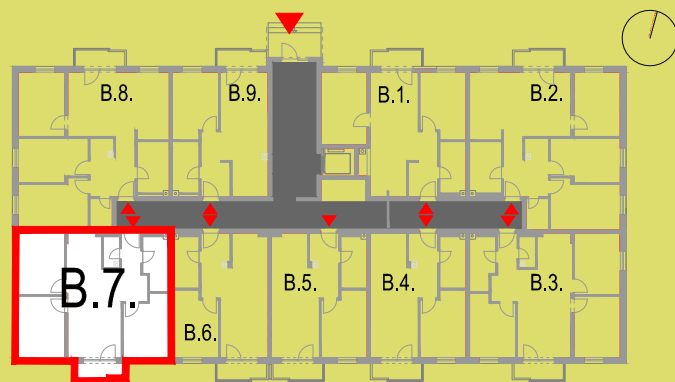
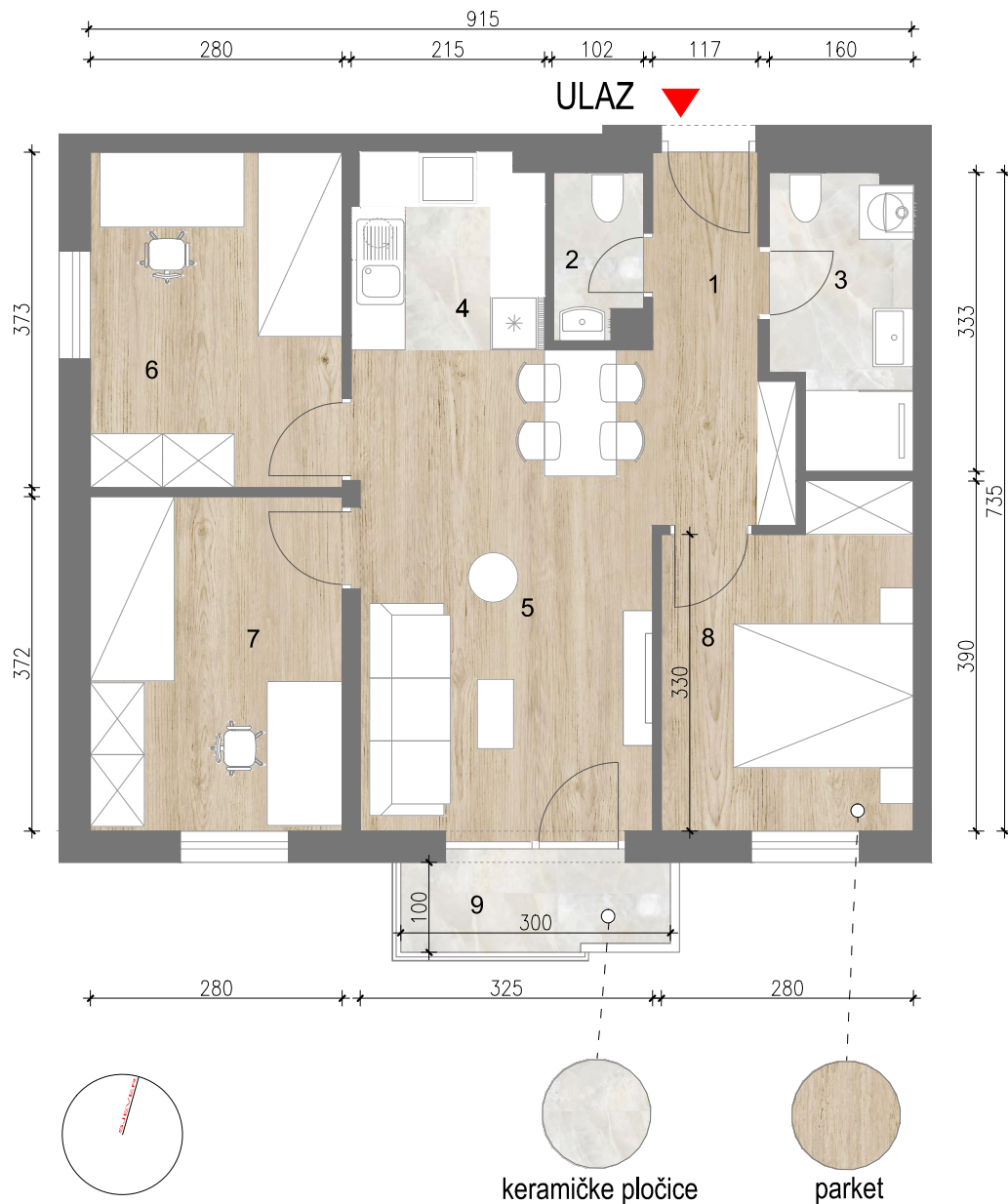


# STAN B.7. 66,60m<sup>2</sup>



OZNAKA	NAZIV PROSTORIJE	NETO POVRŠINA/m <sup>2</sup>	KOEF.	NETO KORISNA POVRŠINA/ m <sup>2</sup>
1	PREDPROSTOR	5,60	1,00	5,60
2	WC	1,70	1,00	1,70
3	KUPAONICA	4,80	1,00	4,80
4	KUHINJA + BLAG.	9,40	1,00	9,40
5	DNEVNI BORAČAK	12,70	1,00	12,70
6	SPAVAĆA SOBA	10,40	1,00	10,40
7	SPAVAĆA SOBA	10,40	1,00	10,40
8	SPAVAĆA SOBA	10,00	1,00	10,00
9	BALKON - natkriven	3,20	0,50	1,60
<b>UKUPNO</b>		<b>68,20</b>		<b>66,60</b>



- 2. KAT -