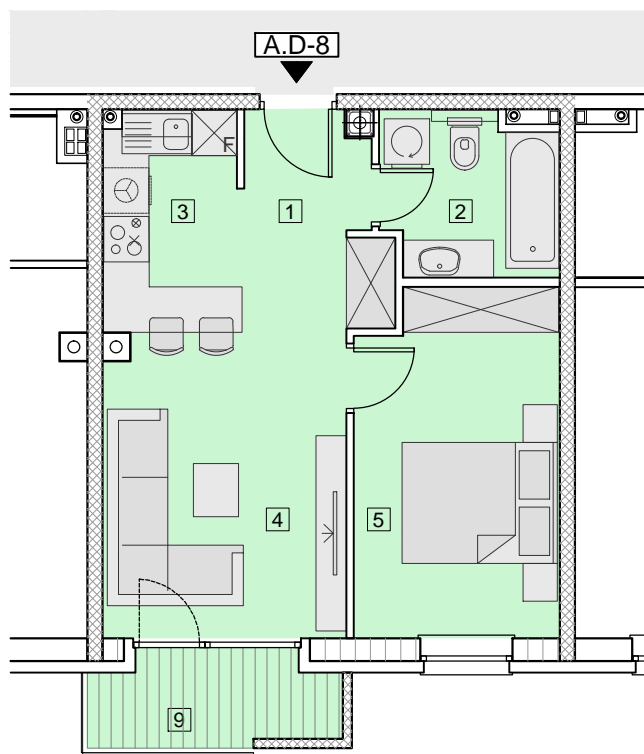


MJ = 1:100



ZGRADA – A STAN A.D-8

PRODAJNA POVRŠINA **41,68 m²**

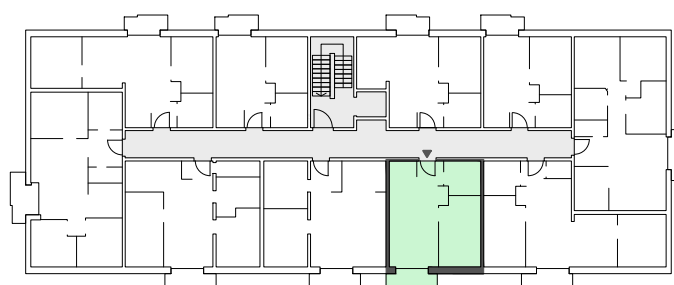
1	PREDPROSTOR	5,02 m ²
2	KUPAONA	4,57 m ²
3	KUHINJA	5,69 m ²
4	DN.SOBA+BLAGOV.	12,93 m ²
5	SPAVAĆA SOBA	12,13 m ²
9	BALKON	
	NATKRIVENI DIO	3,24 x 0,25 = 0,81 m ²
	LOGGIA	0,71 x 0,75 = 0,53 m ²

UKUPNA NETO POVRŠINA **44,29 m²**

UKUPNA NETO KORISNA POVRŠINA **41,68 m²**



4.KAT



D-8