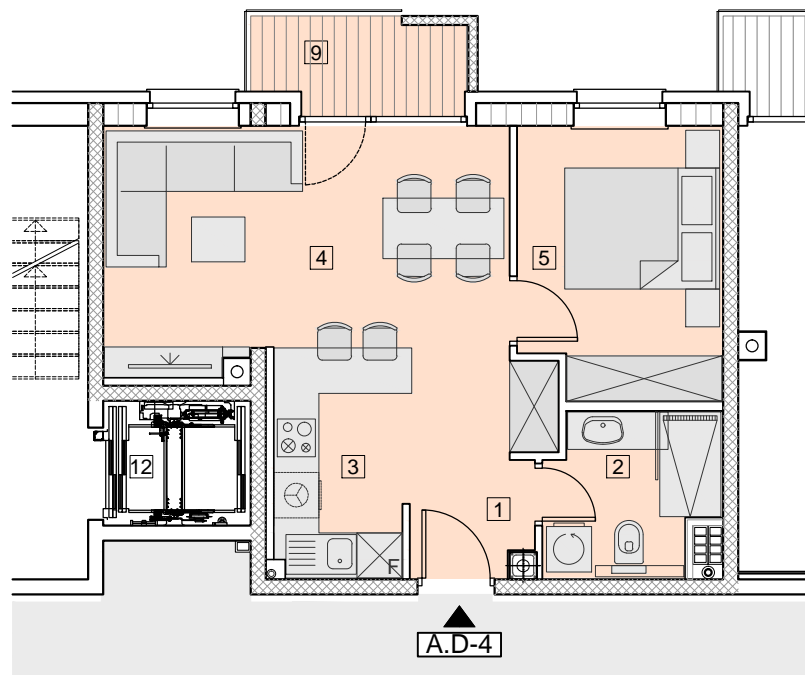


MJ = 1:100



ZGRADA – A STAN A.D-4

**PRODAJNA POVRŠINA** **42,28 m<sup>2</sup>**

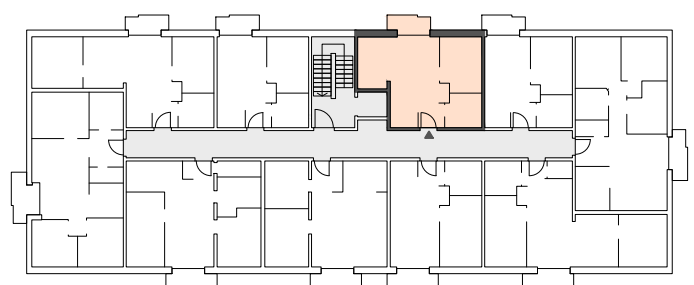
1	PREDPROSTOR	5,09 m <sup>2</sup>
2	KUPAONA	4,36 m <sup>2</sup>
3	KUHINJA	5,39 m <sup>2</sup>
4	DN.SOBA+BLAGOV.	16,78 m <sup>2</sup>
5	SPAVAĆA SOBA	9,43 m <sup>2</sup>
9	BALKON	
	NATKRIVENI DIO	2,78 x 0,25 = 0,70 m <sup>2</sup>
	LOGGIA	0,71 x 0,75 = 0,53 m <sup>2</sup>

**UKUPNA NETO POVRŠINA** **44,54 m<sup>2</sup>**

**UKUPNA NETO KORISNA POVRŠINA** **42,28 m<sup>2</sup>**



**4.KAT**



**D-4**