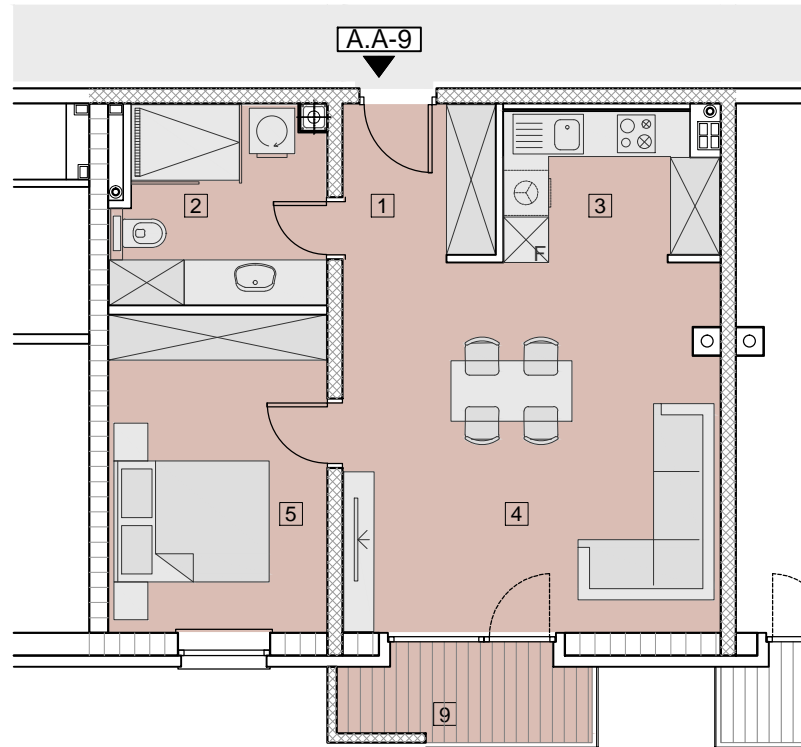


MJ = 1:100



ZGRADA – A STAN A.A-9

**PRODAJNA POVRŠINA** **55,24 m<sup>2</sup>**

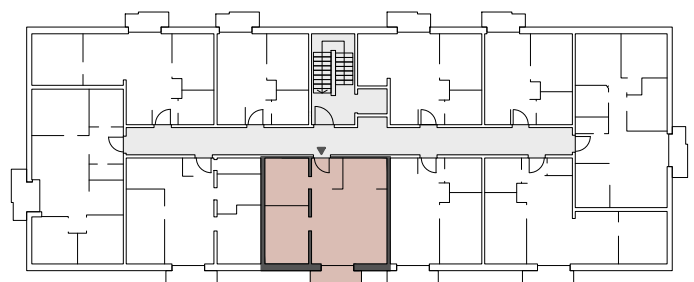
1	PREDPROSTOR	4,17 m <sup>2</sup>
2	KUPAONA	6,86 m <sup>2</sup>
3	KUHINJA	5,41 m <sup>2</sup>
4	DN.SOBA+BLAGOV.	24,61 m <sup>2</sup>
5	SPAVAĆA SOBA	12,04 m <sup>2</sup>
9	BALKON	
	NATKRIVENI DIO	3,24 x 0,50 = 1,62 m <sup>2</sup>
	LOGGIA	0,71 x 0,75 = 0,53 m <sup>2</sup>

**UKUPNA NETO POVRŠINA** **57,04 m<sup>2</sup>**

**UKUPNA NETO KORISNA POVRŠINA** **55,24 m<sup>2</sup>**



**1.KAT**



**A-9**