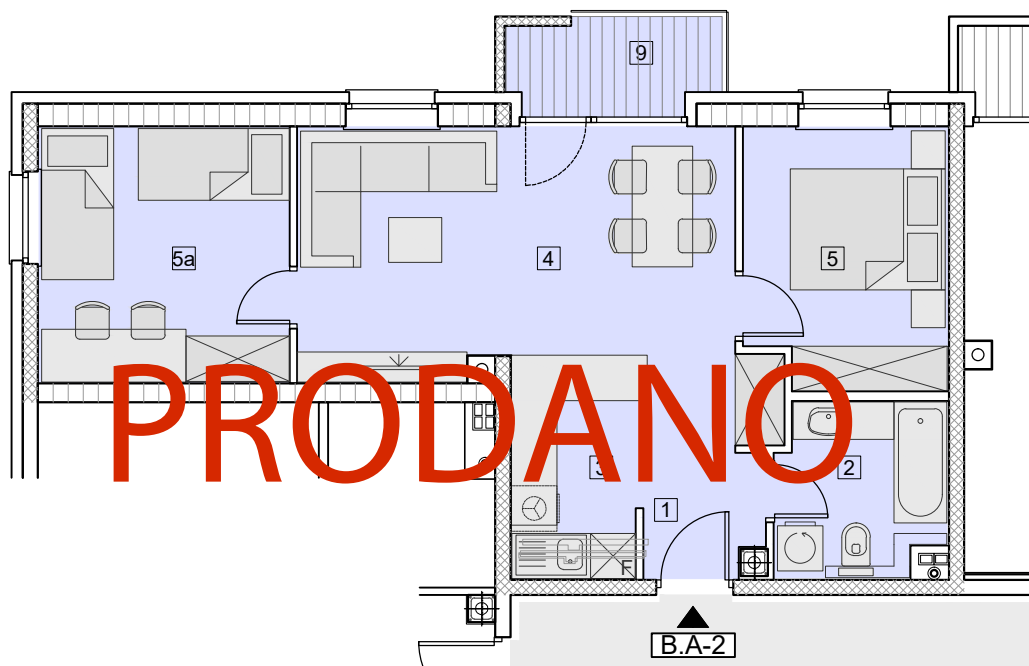


MJ = 1:100

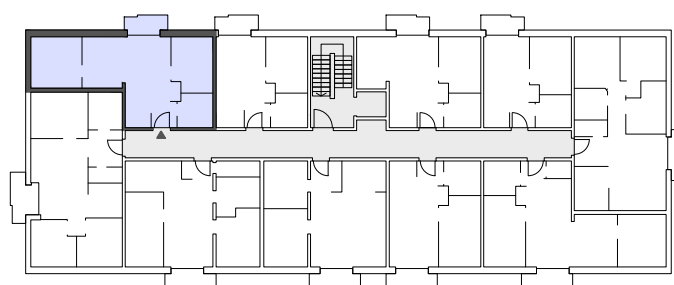


ZGRADA – B STAN B.A-2

PRODAJNA POVRŠINA		55,61 m <sup>2</sup>
1	PREDPROSTOR	5,07 m <sup>2</sup>
2	KUPAONA	4,75 m <sup>2</sup>
3	KUHINJA	5,06 m <sup>2</sup>
4	DN.SOBA+BLAGOV.	18,56 m <sup>2</sup>
5	SPAVAĆA SOBA	9,08 m <sup>2</sup>
5a	SPAVAĆA SOBA	11,17 m <sup>2</sup>
9	BALKON	
	NATKRIVENI DIO	2,78 x 0,50 = 1,39 m <sup>2</sup>
	LOGGIA	0,71 x 0,75 = 0,53 m <sup>2</sup>
UKUPNA NETO POVRŠINA		57,18 m <sup>2</sup>
UKUPNA NETO KORISNA POVRŠINA		55,61 m <sup>2</sup>



1.KAT



A-2