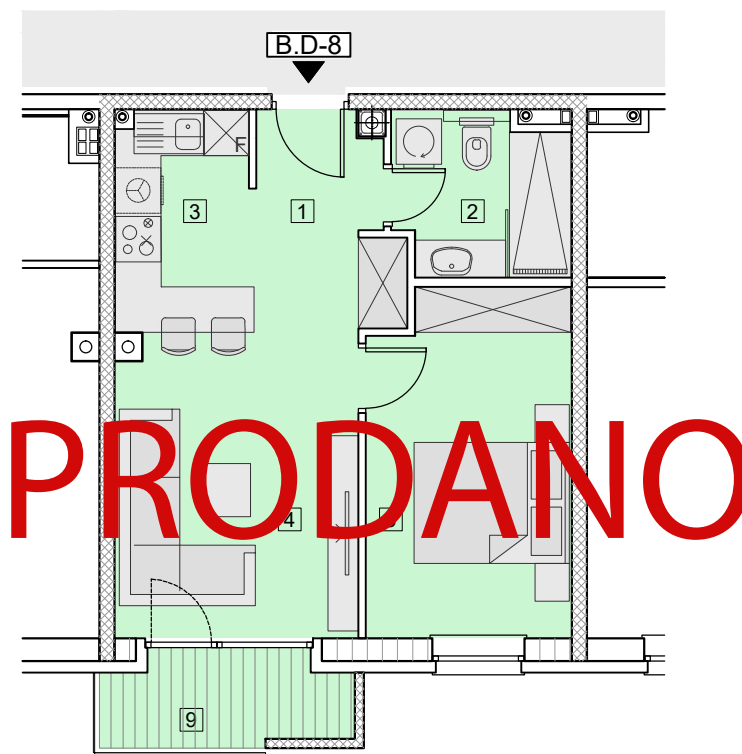


MJ = 1:100



ZGRADA – B STAN B.D-8

**PRODAJNA POVRŠINA** **41,68 m<sup>2</sup>**

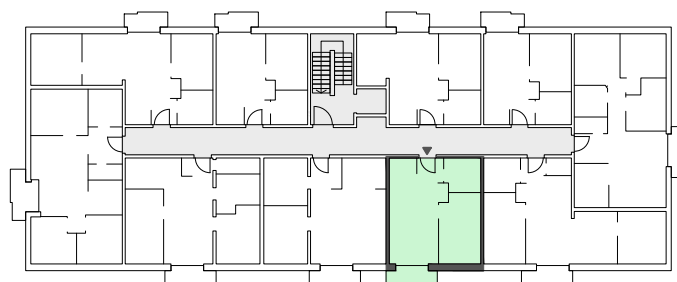
1	PREDPROSTOR	5,02 m <sup>2</sup>
2	KUPAONA	4,57 m <sup>2</sup>
3	KUHINJA	5,69 m <sup>2</sup>
4	DN.SOBA+BLAGOV.	12,93 m <sup>2</sup>
5	SPAVAĆA SOBA	12,13 m <sup>2</sup>
9	BALKON	
	NATKRIVENI DIO	3,24 x 0,25 = 0,81 m <sup>2</sup>
	LOGGIA	0,71 x 0,75 = 0,53 m <sup>2</sup>

**UKUPNA NETO POVRŠINA** **44,29 m<sup>2</sup>**

**UKUPNA NETO KORISNA POVRŠINA** **41,68 m<sup>2</sup>**



**4.KAT**



**D-8**