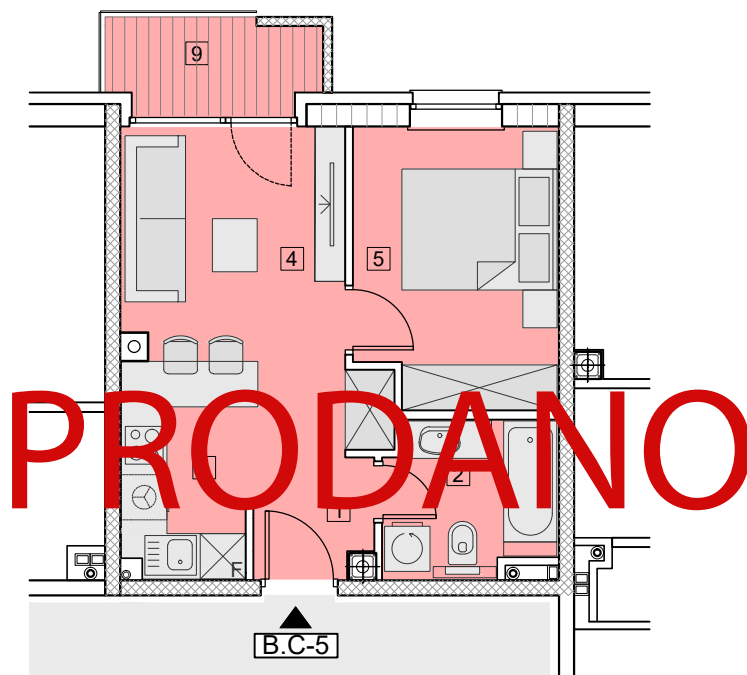


MJ = 1:100



ZGRADA – B STAN B.C-5

PRODAJNA POVRŠINA **34,86 m²**

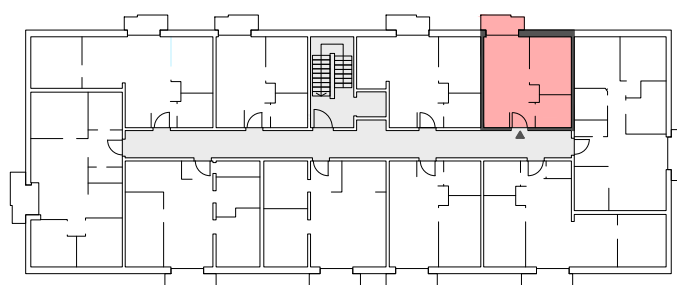
| | | |
|---|-----------------|-----------------------------------|
| 1 | PREDPROSTOR | 4,67 m ² |
| 2 | KUPAONA | 4,29 m ² |
| 3 | KUHINJA | 4,87 m ² |
| 4 | DN.SOBA+BLAGOV. | 9,39 m ² |
| 5 | SPAVAĆA SOBA | 9,72 m ² |
| 9 | BALKON | |
| | NATKRIVENI DIO | 2,78 x 0,50 = 1,39 m ² |
| | LOGGIA | 0,71 x 0,75 = 0,53 m ² |

UKUPNA NETO POVRŠINA **36,43 m²**

UKUPNA NETO KORISNA POVRŠINA **34,86 m²**



3.KAT



C-5