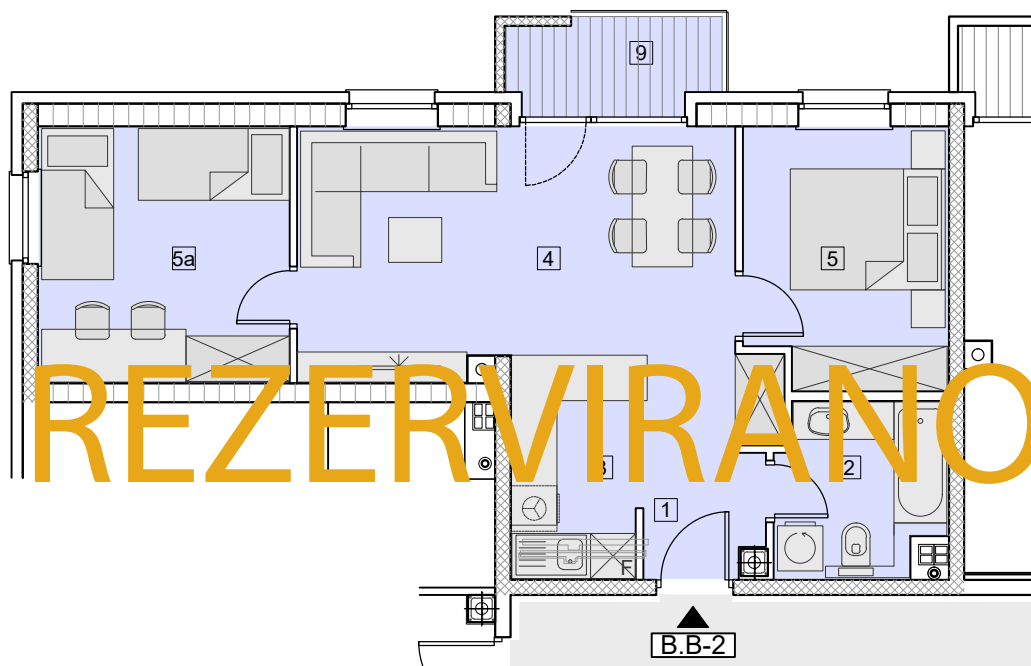


MJ = 1:100

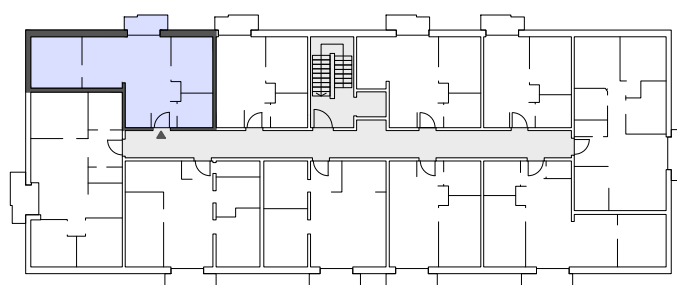


## ZGRADA – B STAN B.B-2

PRODAJNA POVRŠINA		55,49 m <sup>2</sup>
1	PREDPROSTOR	5,07 m <sup>2</sup>
2	KUPAONA	4,63 m <sup>2</sup>
3	KUHINJA	5,06 m <sup>2</sup>
4	DN.SOBA+BLAGOV.	18,56 m <sup>2</sup>
5	SPAVAĆA SOBA	9,08 m <sup>2</sup>
5a	SPAVAĆA SOBA	11,17 m <sup>2</sup>
9	BALKON	
	NATKRIVENI DIO	2,78 x 0,50 = 1,39 m <sup>2</sup>
	LOGGIA	0,71 x 0,75 = 0,53 m <sup>2</sup>
UKUPNA NETO POVRŠINA		57,06 m <sup>2</sup>
UKUPNA NETO KORISNA POVRŠINA		55,49 m <sup>2</sup>



2.KAT



B-2