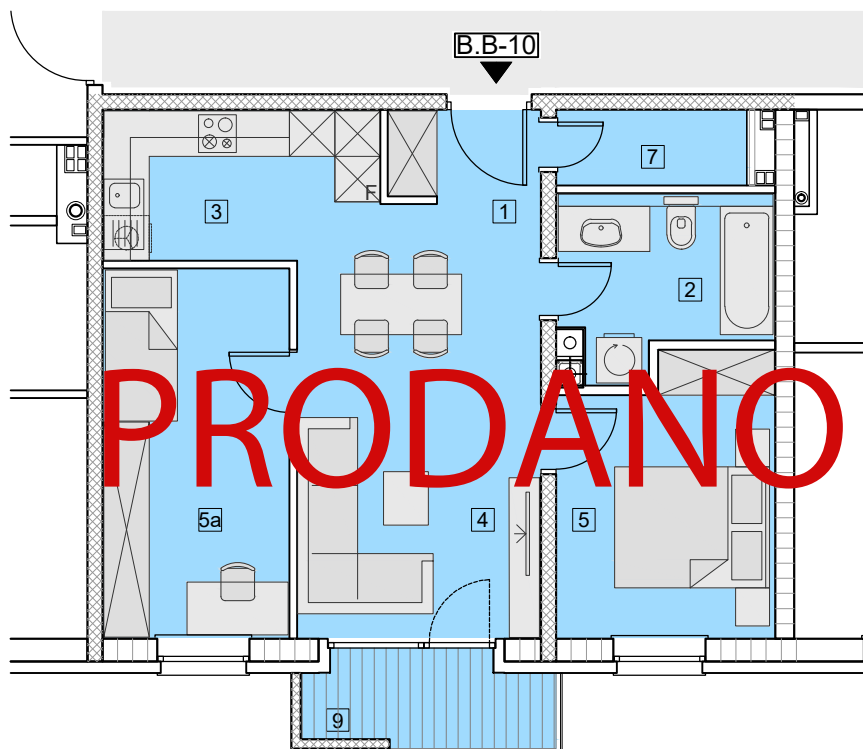


MJ = 1:100



ZGRADA – B STAN B.B-10

PRODAJNA POVRŠINA **60,24 m²**

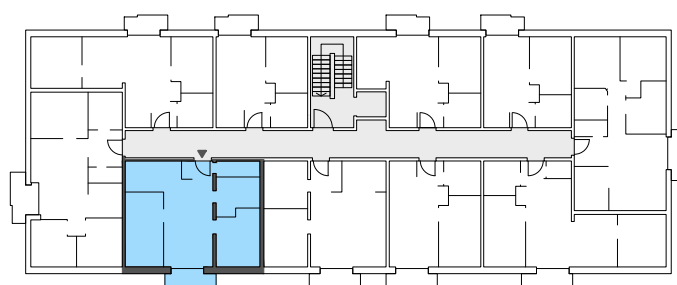
1	PREDPROSTOR	2,41 m ²
2	KUPAONA	5,50 m ²
3	KUHINJA	7,24 m ²
4	DN.SOBA+BLAGOV.	18,29 m ²
5	SPAVAĆA SOBA	10,13 m ²
5a	SPAVAĆA SOBA	11,98 m ²
7	SPREMIŠTE	2,54 m ²
9	BALKON	
	NATKRIVENI DIO	3,24 x 0,50 = 1,62 m ²
	LOGGIA	0,71 x 0,75 = 0,53 m ²

UKUPNA NETO POVRŠINA **62,04 m²**

UKUPNA NETO KORISNA POVRŠINA **60,24 m²**



2.KAT



B-10