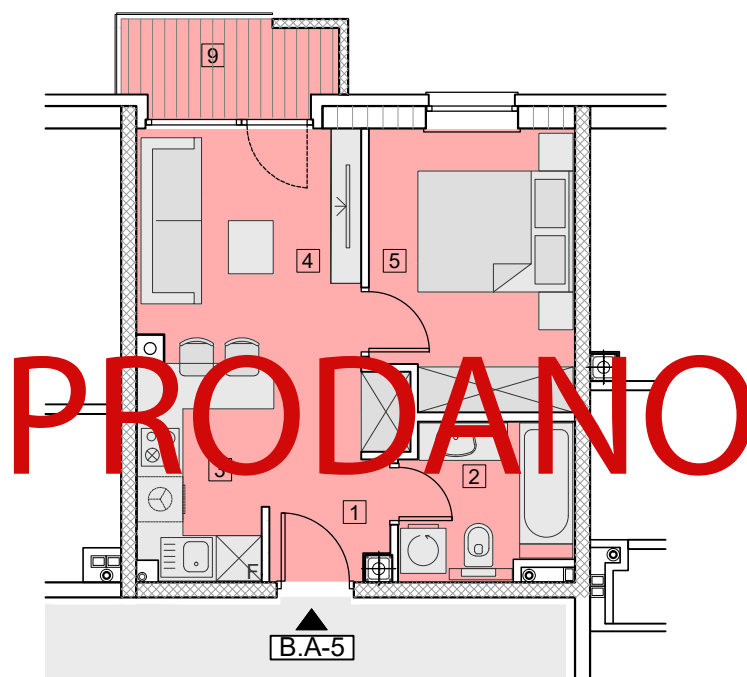


MJ = 1:100



ZGRADA – B STAN B.A-5

**PRODAJNA POVRŠINA** **34,86 m<sup>2</sup>**

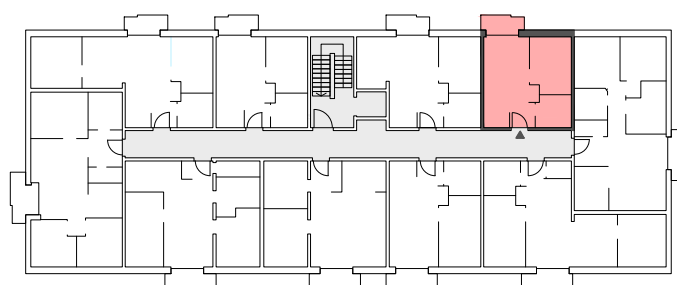
1	PREDPROSTOR	4,67 m <sup>2</sup>
2	KUPAONA	4,29 m <sup>2</sup>
3	KUHINJA	4,87 m <sup>2</sup>
4	DN.SOBA+BLAGOV.	9,39 m <sup>2</sup>
5	SPAVAĆA SOBA	9,72 m <sup>2</sup>
9	BALKON	
	NATKRIVENI DIO	2,78 x 0,50 = 1,39 m <sup>2</sup>
	LOGGIA	0,71 x 0,75 = 0,53 m <sup>2</sup>

**UKUPNA NETO POVRŠINA** **36,43 m<sup>2</sup>**

**UKUPNA NETO KORISNA POVRŠINA** **34,86 m<sup>2</sup>**



**1.KAT**



**A-5**