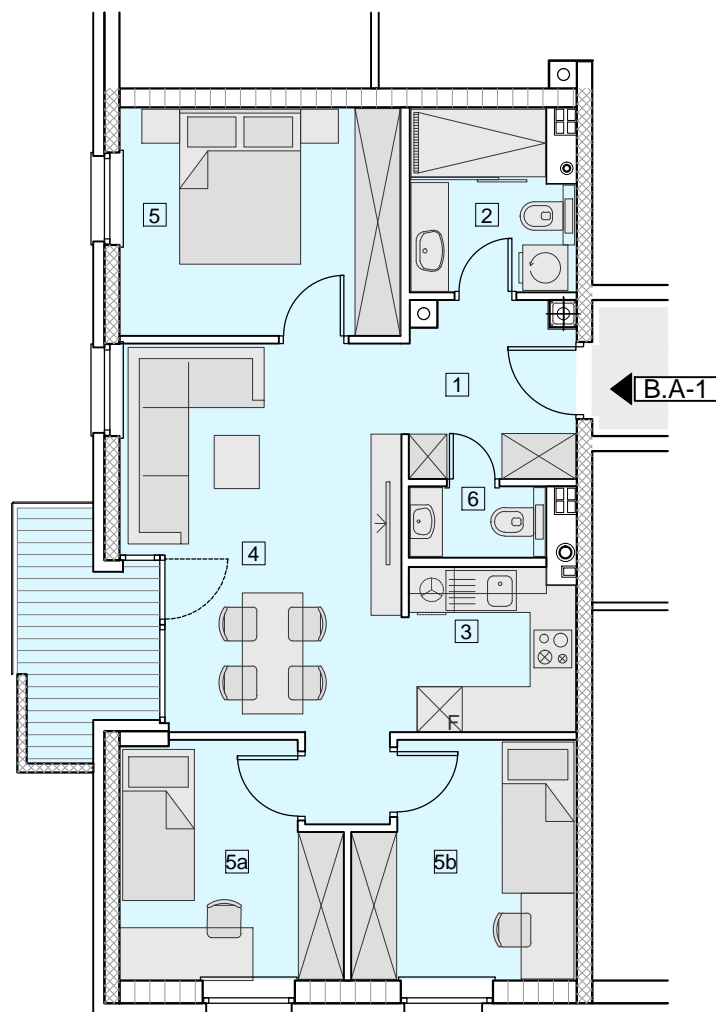


MJ = 1:100



ZGRADA – B STAN B.A-1

PRODAJNA POVRŠINA **66,92m²**

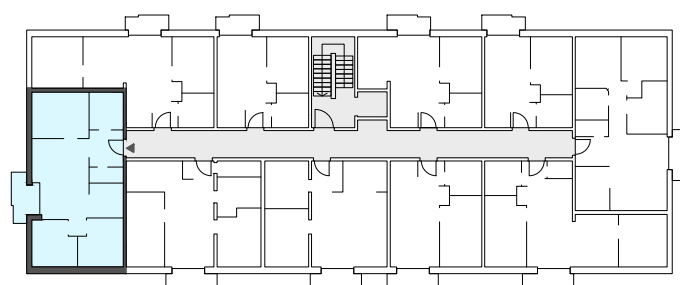
| | | |
|----|-----------------|-----------------------------------|
| 1 | PREDPROSTOR | 5,09 m ² |
| 2 | KUPAONA | 4,70 m ² |
| 3 | KUHINJA | 4,72 m ² |
| 4 | DN.SOBA+BLAGOV. | 19,48 m ² |
| 5 | SPAVAĆA SOBA | 11,10 m ² |
| 5a | SPAVAĆA SOBA | 8,70 m ² |
| 5b | SPAVAĆA SOBA | 8,59 m ² |
| 6 | WC | 1,57 m ² |
| 9 | BALKON | |
| | NATKRIVENI DIO | 3,24 x 0,50 = 1,62 m ² |
| | LOGGIA | 1,80 x 0,75 = 1,35 m ² |

UKUPNA NETO POVRŠINA **68,99 m²**

UKUPNA NETO KORISNA POVRŠINA **66,92 m²**



1.KAT



A-1